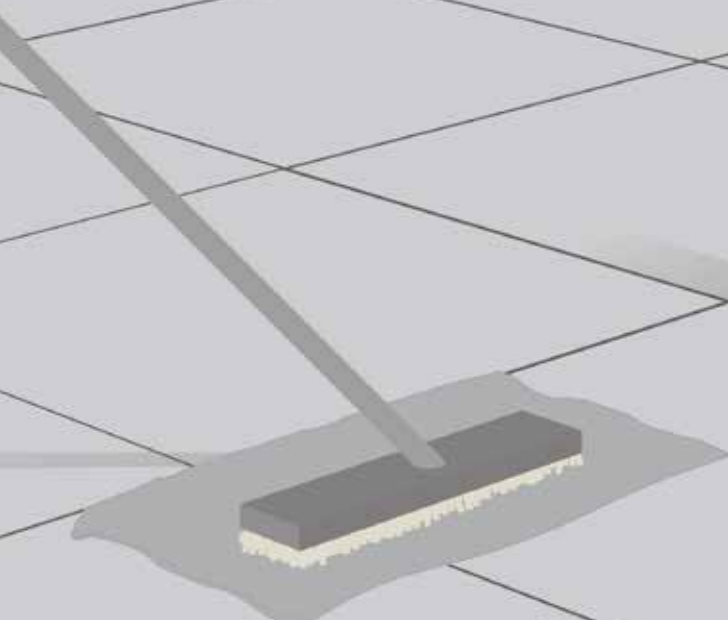


# CLEANING AND MAINTENANCE

**COTTOD'ESTE** | LA  
BELLEZZA  
IN  
CERAMICA

Nuove Superfici



# 1 Cleaning "post-installation"



"Post-installation" cleaning helps remove residues of joint grouts, cement and lime. This operation is mandatory after installation both for glazed and unglazed tiles. Never clean tiles that are too hot (e.g. exposed to sunlight during hot summer months) since the reaction of aggressive chemicals may become harsher. In the summer, proceed with the operation during the coolest period of the day.



## Non-slip surfaces

Due to their particular non-slip, rough or structured textures, non-slip surfaces are more difficult to clean. Therefore pay particular attention to cleaning methods, in particular clean sooner and use motorised brushes with white and beige discs.



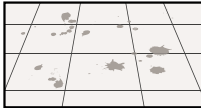
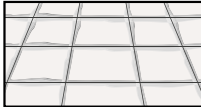
GROUT USED	WHEN TO CLEAN	WHAT TO USE	INSTRUCTIONS
<b>Cement grout mixed with water</b>	After 4/5 days and within 10 days from grouting	Acid-based detergent  (Cf. "List of acid-based detergents")	Follow the instructions given by the manufacturer of the detergent. Test the product on the tiles before use. This applies in particular to honed or polished products. Before cleaning the surfaces must be dampened with water. After cleaning, dry up any remaining liquid (if possible using a wet vacuum cleaner) and rinse thoroughly and several times with water. Soak up any remaining rinsing water with a wet vacuum cleaner or a cloth.
<b>Epoxy grouting, Two-component and reactive</b>	Immediately	Follow the instructions given by the grouting manufacturer	This type of product must be removed immediately and diligently since these grouts harden very rapidly, even in just a few minutes. Strictly follow the cleaning methods recommended by the grout manufacturer and check if it is effective by performing a cleaning test before grouting the entire floor/wall.

TYPE OF DETERGENT	NAME OF DETERGENT	PRODUCER
Acid-based	<b>KERANET (*)</b>	MAPEI
	<b>CEMENT REMOVER (*)</b>	FABERCHIMICA
	<b>PAVIM (*)</b>	PANARIAGROUP
	<b>DETERDEK (*)</b>	FILA
	<b>TREK (*)</b>	LITHOFIN
	<b>ZEMENTSCHLEIERENTFERNER (*)</b>	MAPEI
	<b>HMK R63 (*)</b>	HMK
	<b>SOLVACID (*)</b>	GEAL
	<b>BONACLEAN (*)</b>	BONASYSTEMS ITALIA
	<b>BONADECON (*)</b> (* Specific for products that are not-resistant to acids)	BONASYSTEMS ITALIA

(\*) Follow the instructions given on the package. Test the product on the tiles before use. This applies in particular to honed or polished products.



## If post-installation cleaning has not been performed correctly

GROUT USED	WHAT DO YOU SEE	WHAT CAN BE DONE
<b>Cement grout mixed with water</b>	Residues, glossy films. 	Repeat washing after installation as described in chapter "1 - Post-installation cleaning", if necessary using the same detergents but in higher concentrations.
<b>Epoxy grouting, two-component and reactive</b>	Grout haze, around the joints. 	Once it has hardened, grout is very difficult or even impossible to remove. Contact the grout manufacturer.

## 2 Cleaning Day to day care



Use warm water and a good quality microfibre cloth, such as **MAGICCLEAN** by **Bonasytems Italy**. Every now and again, e.g. every 10-20 days depending on the state of the flooring, use neutral detergents diluted with hot water, that are wax-free, and do not deposit glossy films. When the cleaning process is finished always rinse with water, using a second good quality microfibre cloth.




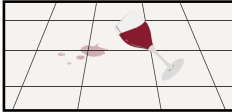

TILE TO BE CLEANED	WHAT TO USE	INSTRUCTIONS
<b>KERLITE COTTO D'ESTE PORCELAIN STONEWARE DECORS</b>	Wax-free neutral detergent (cf. "List of detergents). DO NOT use alcohol, acids, solvents, abrasive detergents, steel wool or scouring pads.	Diluted with plenty of hot water. Rinse thoroughly after washing. For all operations (washing, rinsing and drying), use good quality microfibre cloths.

TYPE OF DETERGENT	NAME OF DETERGENT	PRODUCER
Acid-base	<b>FLOOR CLEANER (*)</b>	FABERCHIMICA
	<b>FILA CLEANER (*)</b>	FILA
	<b>PFLEGEREINIGER (*)</b>	LITHOFIN
	<b>HMK P15 (*)</b>	HMK
	<b>BONAMAIN PLUS (*)</b> do not use for cleaning decors	BONASYSTEMS ITALIA

(\*) Follow the instructions given on the package. Test the product before actual use. This applies in particular to honed or polished products.



## If daily cleaning has been done using unsuitable detergents.

TILE TO BE CLEANED	WHAT DO YOU SEE	WHAT CAN BE DONE
<b>KERLITE COTTO D'ESTE PORCELAIN STONEWARE DECORS</b>	Opaque haze visible. The floor is glossier than the spare pieces that have not been installed. 	Use a detergent such as Tile Cleaner made by Faberchimica or Bonadecon made by Bonasystems Italia. Use product undiluted and let it act for 5 to 10 minutes. Then rub with a white pad, rinse thoroughly with water, soak up any remaining rinsing liquid with a wet vacuum cleaner or a cloth and finally dry with a good quality microfibre cloth, such as MAGICCLEAN by Bonasystems Italia.
	Opaque haze visible when in contact with various types of liquid. 	
	Footprint marks. 	

# 3 Cleaning heavy duty

TILE TO BE CLEANED	TYPE OF STAIN/DIRT	WHAT TO USE
<b>KERLITE</b> <b>COTTO D'ESTE PORCELAIN</b> <b>STONEWARE</b>	Coffee, Coca Cola®, fruit juices	Alkaline-based detergent
	Grease, dust from foot traffic, thorough cleaning	Alkaline-based detergent
	Wine	Oxidising detergent
	Lime residues	Acid-based detergents
	Rust	Acid-based detergents
	Tyre marks, pencil marks and metal marks	Abrasive paste
	Ink, felt-tip pen	Solvent-based detergent
	Dirt from grout	Detergent for grout
<b>DECORS</b>	Any	Neutral, wax-free detergent



INSTRUCTIONS	NAME OF DETERGENT	PRODUCER
Follow the instructions given by the manufacturer of the detergent.	<b>COLOURED STAIN REMOVER PS87</b>	Faberchimica Fila
Follow the instructions given by the manufacturer of the detergent.	<b>PS87 LITONET INTENSIVREINIGER HMK R55 TASKI R20-STRIP BONAMAIN, BONADECAN</b>	Fila Litokol Lithofin HMK Johnsondiversey Bonasystems Italia
Follow the instructions given by the manufacturer of the detergent.	<b>OXIDANT</b>	Faberchimica
Follow the instructions given by the manufacturer of the detergent. Test the product before use. This applies in particular to honed or polished products.	<b>VIAKAL</b>	Procter & Gamble
Dilute the product and apply directly on the stain. Allow to act for 10/20 minutes then rinse thoroughly. If necessary repeat. Test the product before actual use. This applies in particular to honed or polished products.	<b>DILUTED MURIATIC ACID</b>	(various manufacturers)
Follow the instructions given by the manufacturer of the detergent. Test the product before use. This applies in particular to honed or polished products.	<b>POLISHING CREAM VIM CLOREX DETERGUM (*) (*) DO NOT use for honed or polished products.</b>	Faberchimica Guaber Zep Italia
Solvents should be applied undiluted directly on the stain. Let them act for about 15/30 seconds. If necessary repeat. As far as "Coloured stain remover" is concerned, follow the manufacturer's instructions.	<b>NITRO THINNER 1,2-DICHLOROETHYLENE TURPENTINE / WHITE SPIRIT COLOURED STAIN REMOVER</b>	(various manufacturers) (various manufacturers) (various manufacturers) Faberchimica
Follow the instructions given by the manufacturer of the detergent.	<b>FUGANET FUGENREINIGER</b>	Fila Lithofin
Use water and a neutral, wax-free detergent. DO NOT use alcohol, acids, solvents, abrasive detergents, steel wool or abrasive sponges.	<b>FLOOR CLEANER FILA CLEANER PFLEGEREINIGER HMK P15 BONAMAIN PLUS</b>	Faberchimica Fila Lithofin HMK Bonasystems Italia

## 4 Non-slip treatment

Non-slip properties of installed floors (glazed or unglazed) can be improved using specific products. Follow the instructions given on the package.

The longer the product is left acting on the tile, the more this increases the non-slip properties. However, this can whiten the tiles a little and make cleaning a little more difficult.



PRODUCT NAME	PRODUCER	INSTRUCTIONS	MAINTENANCE
<b>BONAGRIP</b>	Bonasystems Italia	Follow the manufacturer's instructions	Follow the manufacturer's instructions

### Advice

Before applying the product make a precautionary test on a tile that is not laid in order to find the most suitable contact time.





## 5 Protective agents for grouts

These are used to reduce porosity and therefore make cement-based grouting more resistant to stains. Use of these protective agents can make cleaning easier. Follow the instructions given on the package. Test the product on the tiles before use. This applies in particular to honed or polished products.



GROUT USED	PRODUCT NAME	MANUFACTURER	INSTRUCTIONS
<b>Cement grout mixed with water</b>	FUGAPROOF KF FUGENSCHUTZ	Fila Lithofin	Follow the manufacturer's instructions





## CLEANING AND MAINTENANCE

**COTTODESTE**<sup>®</sup> | LA  
Nuove Superfici | BELLEZZA  
IN  
CERAMICA

Via Emilia Romagna, 31 41049 Sassuolo (MO) Italy

+39 0536 814 911 fax +39 0536 814 918

[cottodeste.it](http://cottodeste.it) - [info@cottodeste.it](mailto:info@cottodeste.it)

PANARIAGROUP INDUSTRIE CERAMICHE S.p.A.